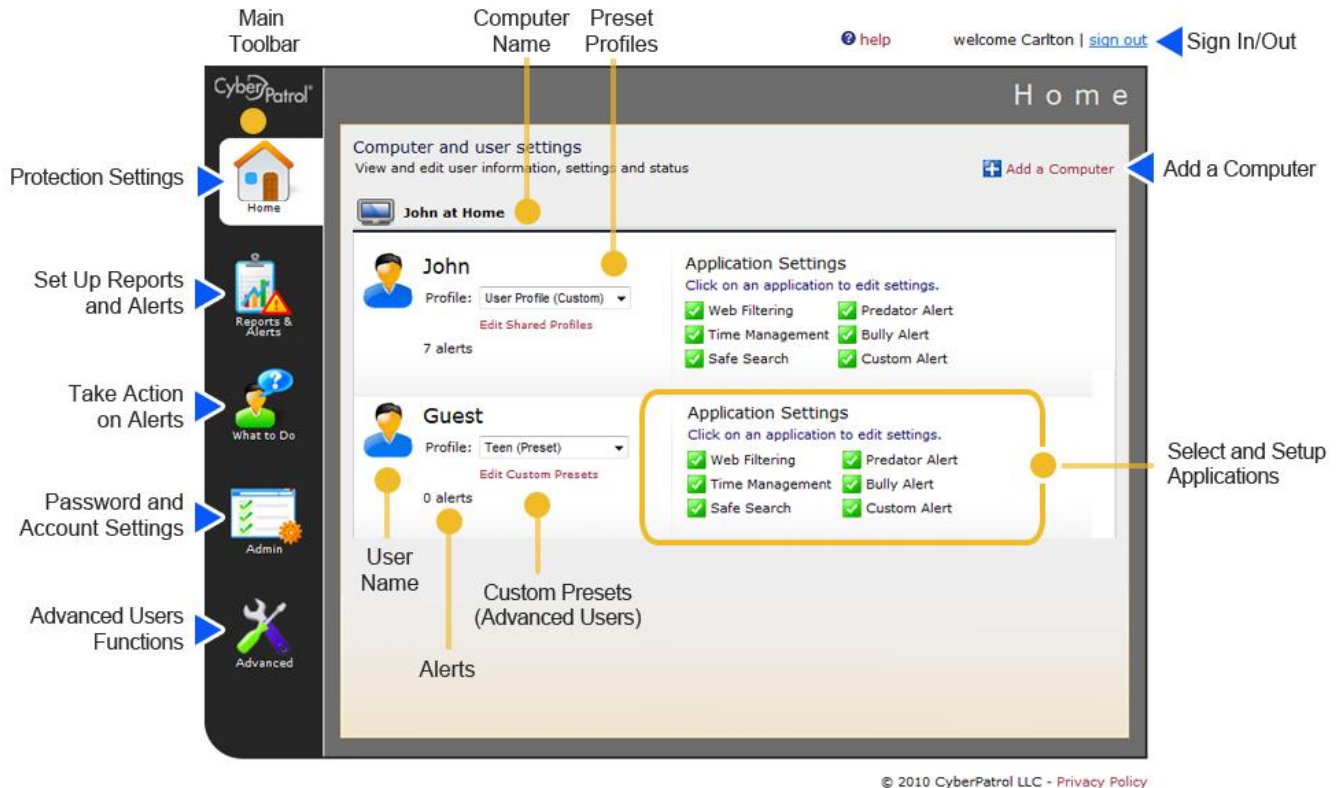


To begin using CyberPatrol Online Protection immediately, follow these 4 easy steps!

1. Activate the Safety Center
2. Load the Scanner on the PC You Want to Protect
3. Select a User Profile to Set Application Settings
4. Choose Reporting Preferences

### Safety Center Home Page Functions



## 1 Activate the Safety Center

Upon purchasing or trial of CyberPatrol Online Protection, you will receive an e-mail that contains the following:

- Link to the activation site
- License ID
- Activation Code

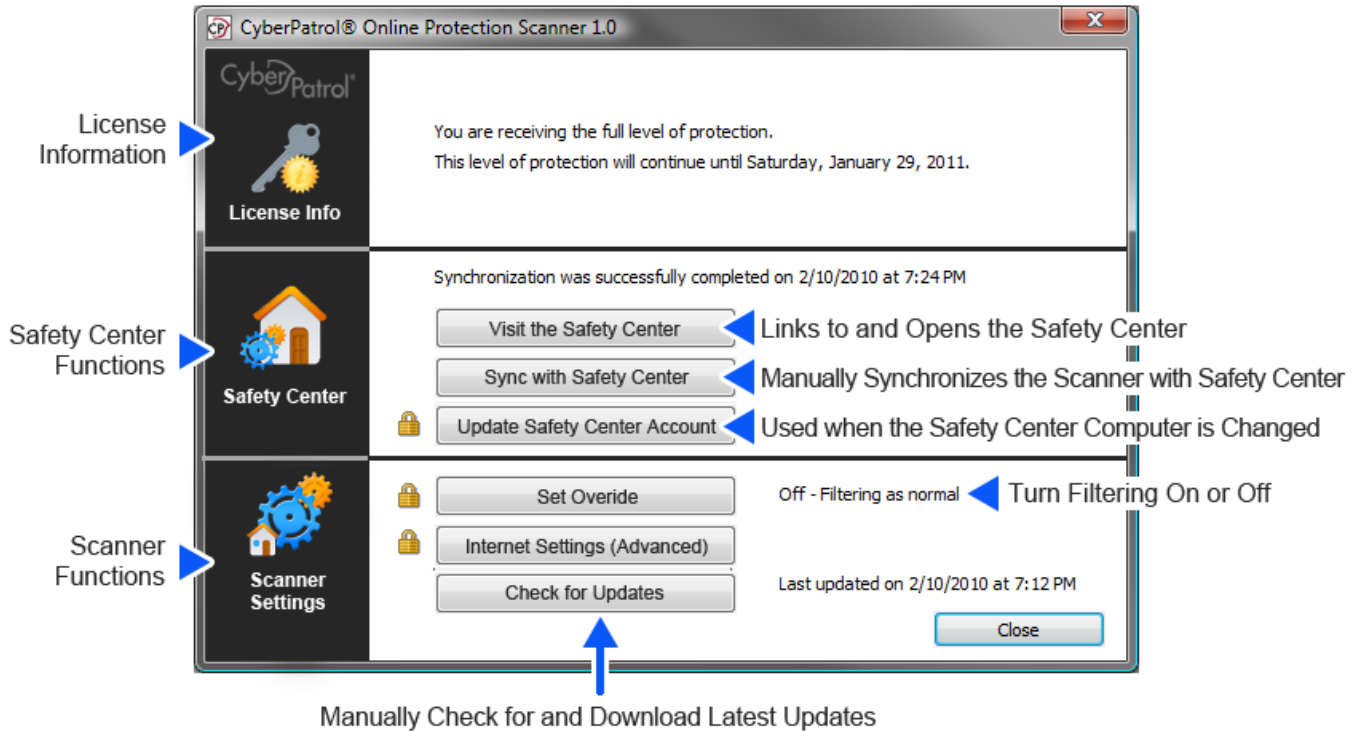
To activate your account:

- a) Go to <https://protection.cyberpatrol.com>.
- b) Click **Sign Up Now**. The Add New License Screen will appear.
- c) Follow the directions and enter the requested information.
- d) Sign in when finished.

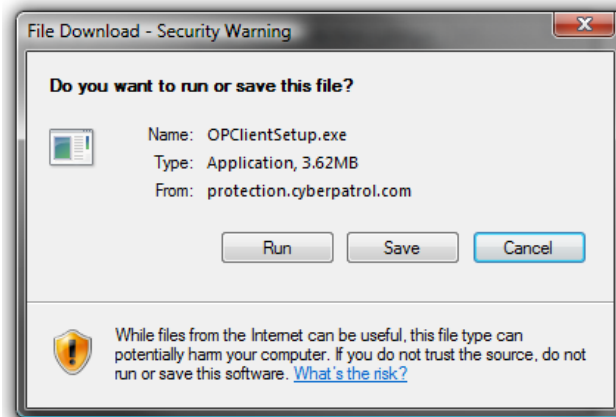
## 2 Load the Scanner on the PC You Want to Protect

Once the Safety Center is setup, install the Scanner on the computer(s) you wish to protect.

### Scanner Functions



- a) Download the software to the computer by going to <https://protection.cyberpatrol.com/downloads/OPClientSetup.exe>.
- b) The file download screen will appear. Click **Run**.

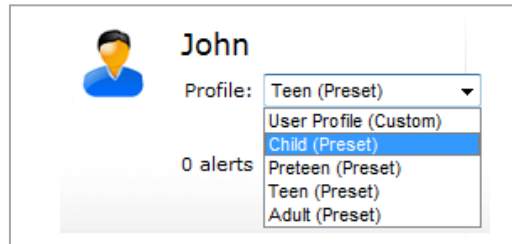


- c) Once the software download is complete, the CyberPatrol Online Protection Setup Wizard will appear on your screen. Click **Next**. Follow the set up instructions.
- d) Click **Finish**. Your installation is complete. CyberPatrol Online Protection is ready to use.

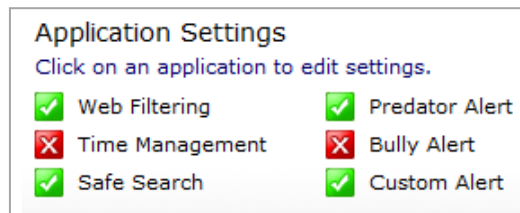
### 3 Select a User Profile to Set Application Settings

CyberPatrol uses selectable preset levels for young children, pre-teen, teen, and adult. Selecting a preset option will automatically set all filtering and alert levels. For example, Children will have more restrictions and monitoring and Adults will have less.

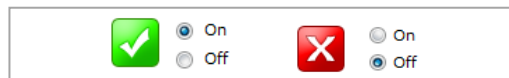
On the Home Page of the Safety Center, Click the drop down menu next to Profile. Click on the *profile that best describes the user: Child, Preteen, Teen, and Adult.*



You can further customize settings by clicking on application names.



Once on the application page, the application can be turned off or on by clicking the appropriate button next to the status indicator.



Each application page lets you select additional options depending on the function of the application. When prompted, you must Click **Save** for your changes to take effect.

### 4 Choose Reporting Preferences

There are two types of reporting in CyberPatrol Online Protection; Alerts and Reports. Reports offer a summary of alerts, web site activity, and other events. An Alert is a notification sent by e-mail when a potential problem is identified.

Click the Report and Alerts icon to set up reports.

- a) Enter the e-mail address of any additional people you want to receive reports and alerts.
- b) Type their e-mail address in one of the Additional e-mail boxes under “Set Up Alert Notifications by User”.
- c) Click on the drop down menu to turn Alerts On or Off by user.
- d) Set report frequency to weekly or monthly by user. Click **Save**.

**Installation and Setup is Complete. You may change or edit your settings at anytime from any computer with Internet Access by logging into your account.**